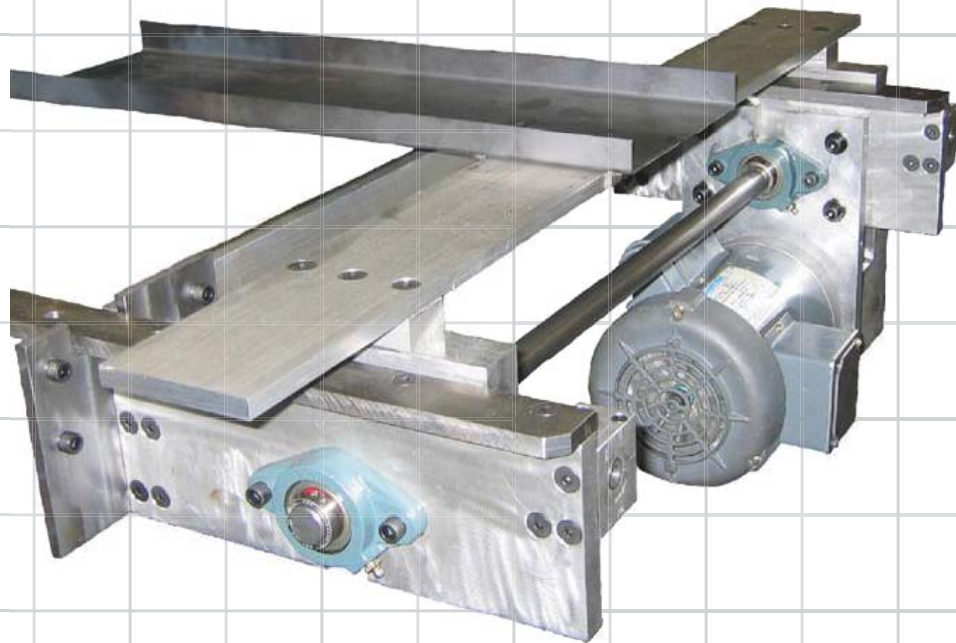


Coral Industrial

17181 LANDWER CT, SPRING LAKE, MI 49456
616-846-4300 • www.q-1enterprises.com



CORAL ELECTRIC SHAKERS

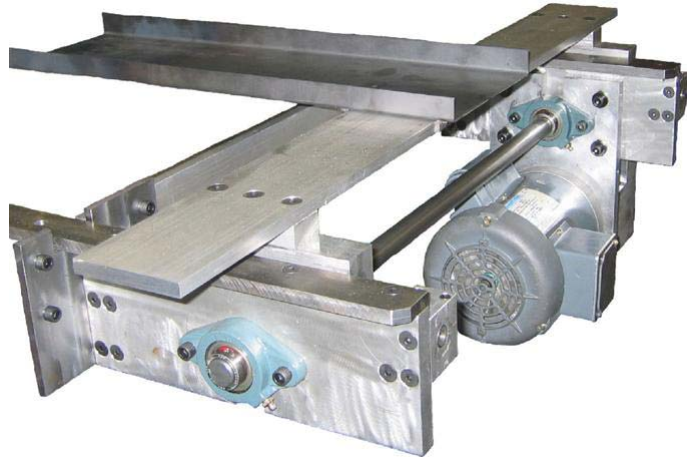
COST LESS TO RUN THAN AIR SHAKERS



Coral Electric Shaker

Finally, a balanced shaker that eliminates maintenance problems!

- This Electric Shaker comes with its own moving bar that you drop your trays over. The shaker is supported and driven from both sides of the press so you can have four trays on one side and none on the other with no tray balance problems.
- Dual or triple drive cams depending on press size. The standard unit for presses with up to 96" beds has two drive cams, and for presses over 96" it has three drive cams.
- Capacity is 75 lbs tray weight per drive cam. Handles more weight than any air shaker!
- Unit has a three to one speed ratio & operates at 210 Strokes Per Min, 21 FPM product conveying speed & is easily reversible!
- This Shaker takes minutes to install! (Removable Tee Slot Mounts)
- All but machined parts are standard and can be purchased from your local suppliers.
- This Electric Shaker is more efficient & costs less to run than air shakers.
- This is the best shaker on the market.



Costs of Running an Electric vs Air Shaker!

Electric Shaker:

The motor on this shaker runs at 2.7 amps at 115 volts = 300 watts, the same as a 300 watt light bulb. Assuming electricity costs of about 10 cents per kilowatt hour, the cost of running this shaker is about 3 cents per hour.

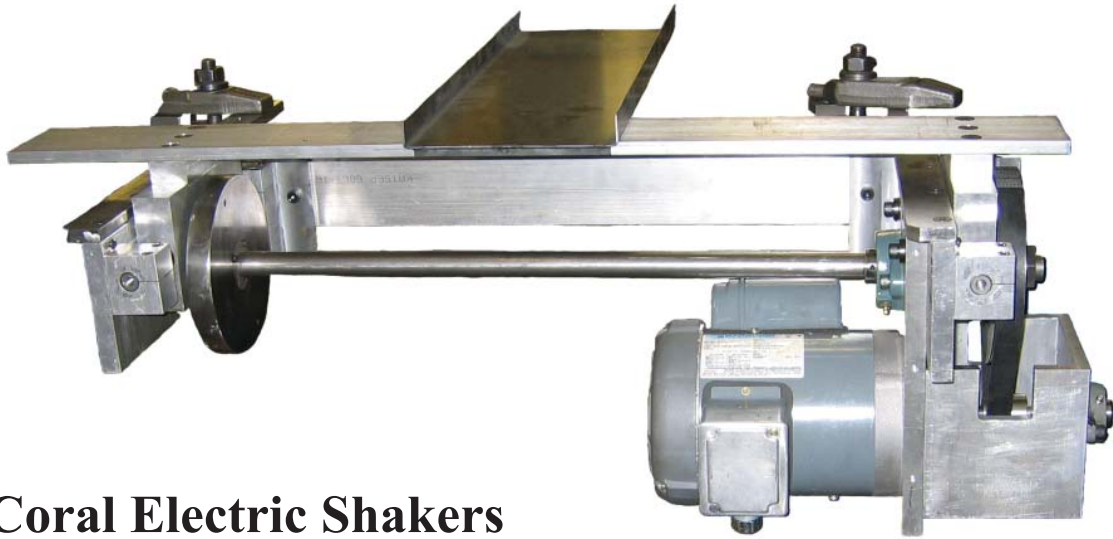
Air Shaker:

The average cost of compressed air is about 3.5 x the cost of electric or about 10 cents per hour.

Electric Shakers cost less to run than Air Shakers.

The real savings come from downtime and maintenance cost. If a press is stopped for shaker repair for one hour, the down time alone would be between \$300 and \$3,000 depending on the size of the press.

See Electric Shaker Video at www.q-1enterprises.com



Coral Electric Shakers





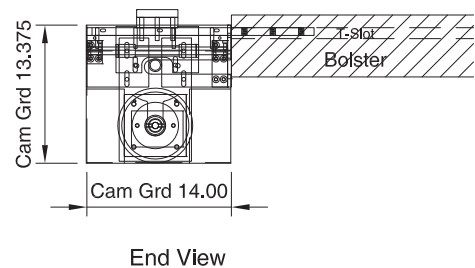
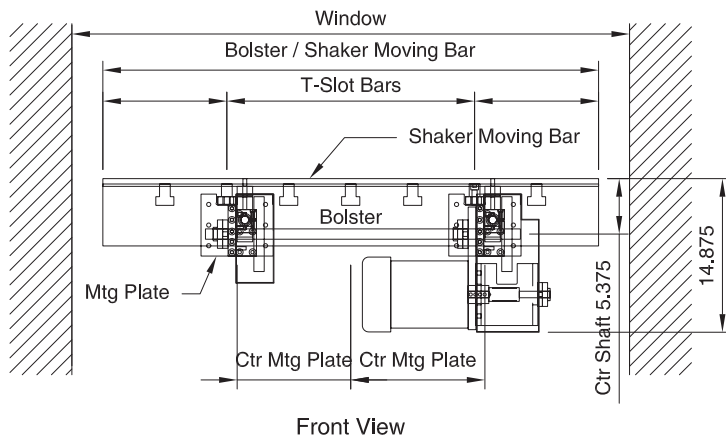
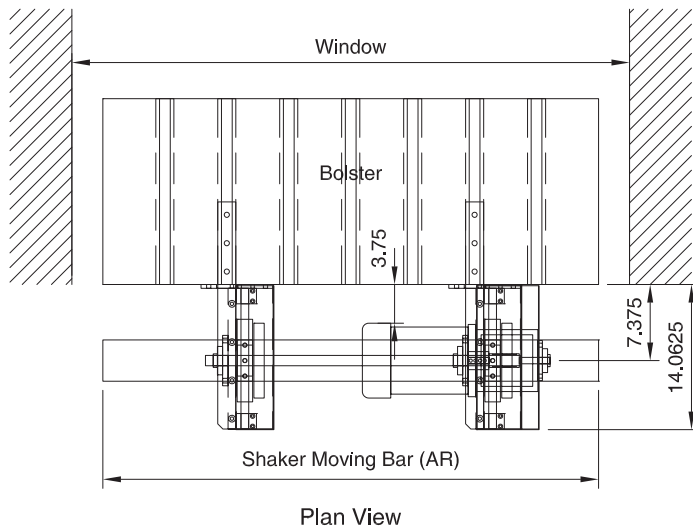
Coral Electric Shaker Version VII

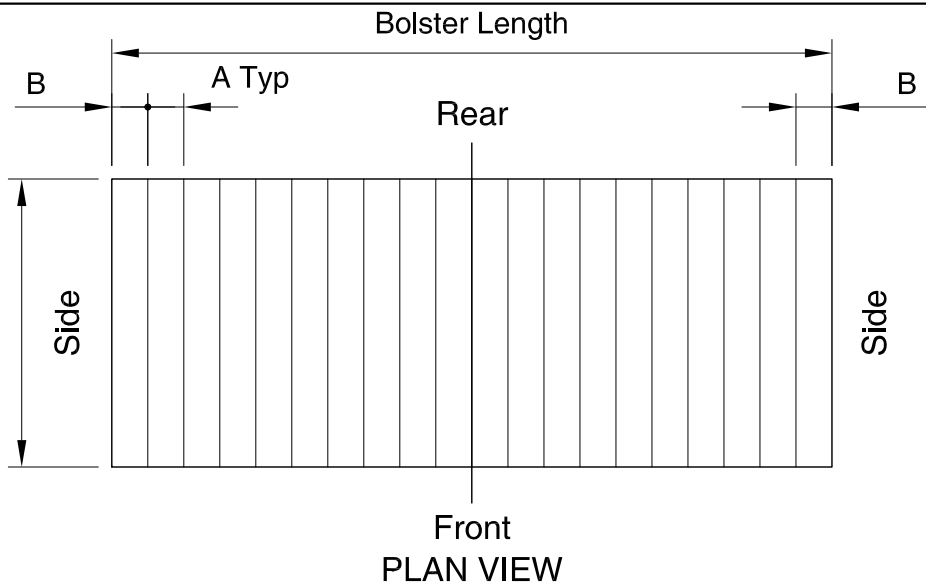
Quick Installation

Quick Installation Using T-Slot Bars:

If you have a 1/2" x 4" wide aluminum support bar bolted to the mounting plates, slide the T-Slot bars all the way into the bolster T-Slots so the 4" wide piece of aluminum comes in contact with the bolster.

Bolt the T-Slot bars down with (3) 1/2" bolts per T-Slot bar and you are ready to plug the unit in and run.





ELECTRIC SHAKER MOUNTING INFORMATION

Shaker mounting on the **Front** ___ **Rear** ___ **Side** ___ of Press.

Shaker to be **Permanently Bolted** to the Press: Yes ___ No ___

Total Length of 4" Aluminum Shaker Moving Bar: _____"

The Top of the Shaker (Moving Bar) is **normally 1/2" Above the Top of the Bolster** (allows for 1/2" UHMW shim under tray).

Motor is **110-V** with cord and mounts on Right Side or Center for large units.

Material Handled: Parts ___ or Scrap ___

Max Size: Width _____" Length _____"

Max Part Length in Direction of Flow _____"

Direction of material flow, **Toward** ___ Shaker **or Away from** ___ Shaker:
This can easily be changed at any time.

Press No _____, Tonnage _____

Press Strokes _____ Per Minute

Dies Loaded from Front ___ or Rear ___ of Press.

Bolster Length _____"

Bolster Thickness _____"

T-Slot Dimensions:

A. Distance Between T-Slots on Center _____"

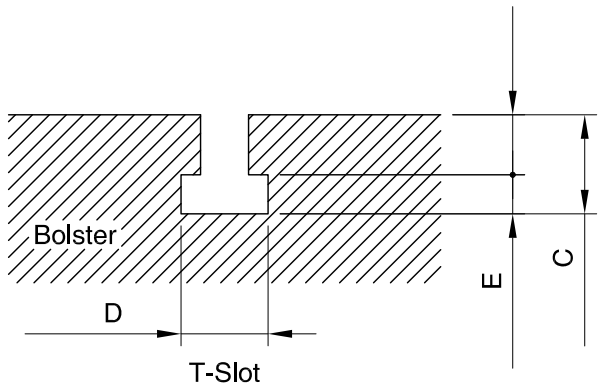
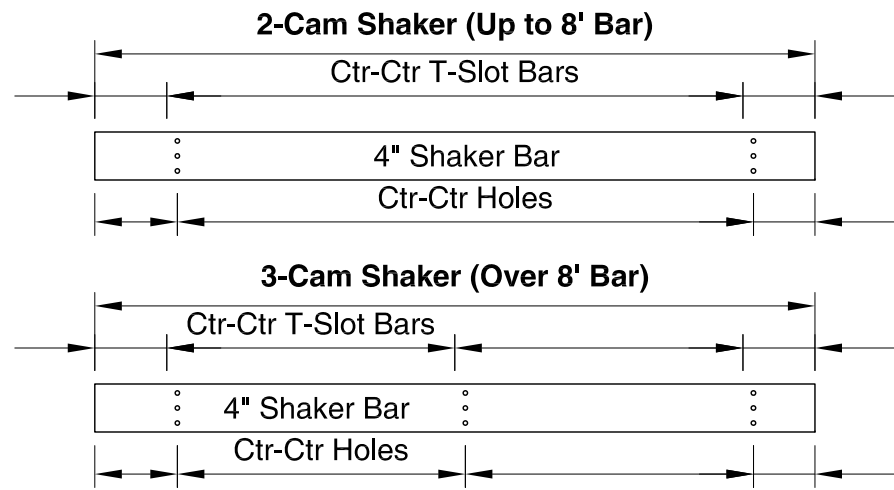
B. End of Bolster to Center of First T-Slot _____"

C. Distance Top of Bolster to Bottom of T-Slot _____"

D. Width of Wide Part of T-Slot _____"

E. Height of Wide Part of T-Slot _____"

Please email this form, Pictures of the Side of Press that unit will be mounted on, and Drawing of your Bolster to coral@q-1enterprises.com.



APPROVED AS DRAWN
 APPROVED AS MARKED
 RESUBMIT FOR APPROVAL
 Please Return one signed copy of the drawing A.S.A.P
 Signed: _____ Date: _____

THIS DRAWING IN DESIGN AND DETAIL IS THE PROPERTY OF CORAL INDUSTRIAL. ALL RIGHTS OF DESIGN AND INVENTION ARE RESERVED. DRAWING IS SUBJECT TO RETURN ON DEMAND.

Q-1 Coral Industrial
 17181 LANDWER CT, SPRING LAKE, MI 49456
 616-846-4300 • www.q-1enterprises.com

Coral Electric Shaker Mounting Info

DRAWN MVP	DATE	DRAWING NO
SCALE	SHEET 1 OF 1	